



Case Study: State of North Dakota



Key Facts:

Industry: Government

Problem: More flexible delivery of vector data to agencies outside the state firewall

Solution: FME SpatialDirect

Results: Significant time and manpower savings in GIS data delivery

Location: North Dakota, USA

Safe Software's FME and FME SpatialDirect have allowed North Dakota state agencies to make GIS data directly accessible to the public via a web-based data-retrieval system hosted at the Information Technology Department.

The Organization

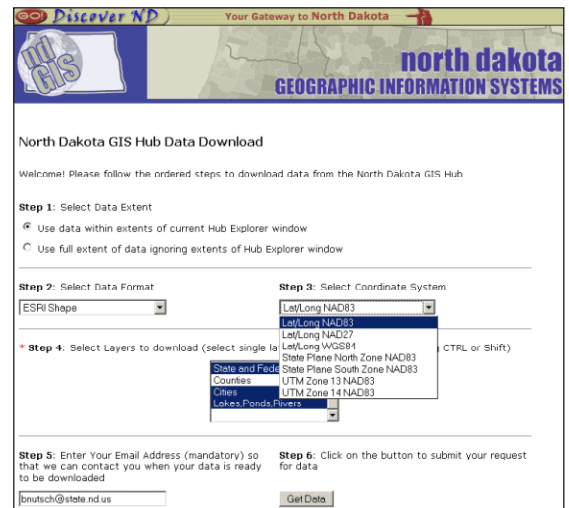
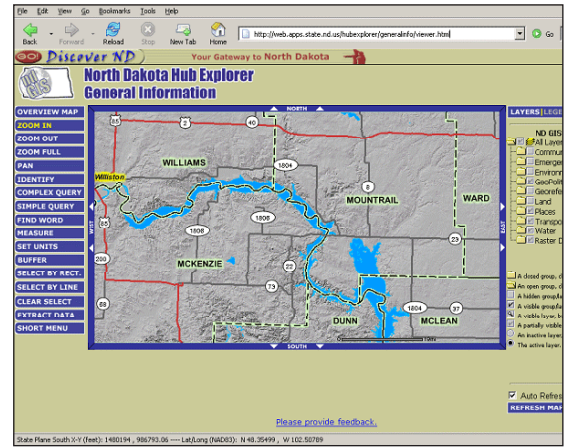
The North Dakota Information Technology Department provides network services, statewide communications services, and computer support to other North Dakota state agencies. It is also responsible for software development and for setting IT standards. The North Dakota Information Technology Department hosts the state's GIS Hub—a database and web infrastructure for hosting and sharing state agency GIS data and applications.

The Challenge

The North Dakota GIS Technical Committee, consisting of seven state agencies, needed an efficient method for delivering vector data to agencies outside the state's firewall. None of the solutions they initially investigated allowed users to specify their own data format and coordinate system as part of a structure that could mesh seamlessly with the existing ESRI ArcIMS applications.

The Solution

The GIS Technical Committee was initially interested in Safe Software's products because FME enabled the GIS Hub to deal with multiple vendor-specific GIS data formats. But FME with FME SpatialDirect also solved their more significant problem of working with the existing ArcIMS infrastructure to allow web-based data delivery. Since FME and FME SpatialDirect run on multiple platforms and operating systems and work with many software products, the configuration can be altered as needed in the future.





“FME and FME SpatialDirect work with our existing infrastructure, were both customizable, and we received great technical support even before the purchase.”

The Results

FME and FME SpatialDirect have helped make the GIS Hub a practical and economical tool, and spatial data paid for with public funds is now directly accessible by the public. Today, users downloading vector data from the GIS Hub have two choices when using the state’s ArcIMS applications: the Hub Explorer or the Metadata Explorer. The browser-based Hub Explorer is an interactive map that allows people to view, query, and download multiple vector datasets at a time from the GIS Hub. The browser-based Metadata Explorer allows people to search graphically or with keywords for data on the GIS Hub and then download the vector dataset of interest.

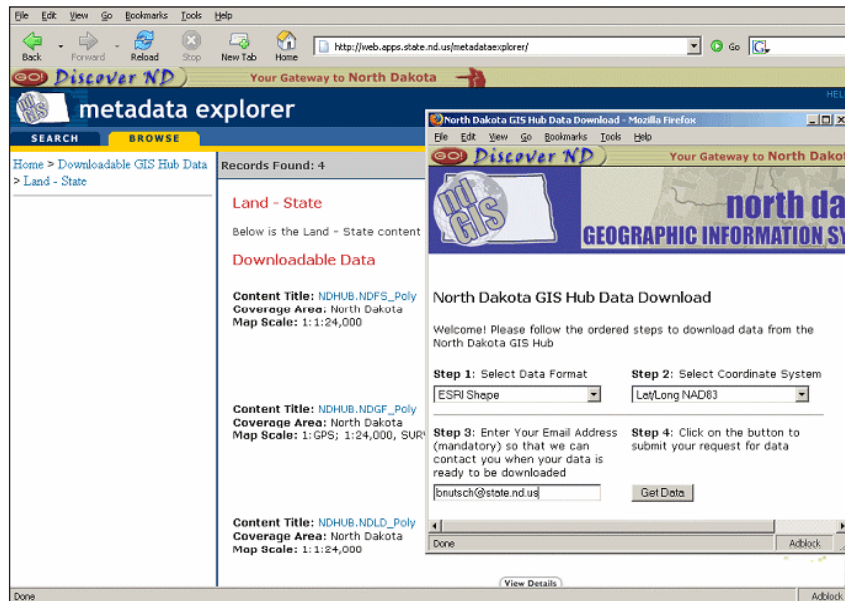
In the first year of operation, the on-line system recorded over 7100 downloads. This represents a significant saving of state agency time and effort. Businesses, utilities, and natural resource industries will benefit from direct access to the database, and this is expected to contribute to economic growth across the state. School curriculums have also been enriched through access to the GIS database.

The Future

With FME readily managing the CAD validation process, plans are underway to use FME to integrate a mapping tool into the system for both internal and external use. Externally, in addition to an approved plan file, clients would also receive a map of the province showing the geographic position of their submission. Internally, personnel can use that same spatial environment to readily see all the land dispositions within a given area. Having that spatial reference would allow staff to more easily coordinate leases and land conveyancing.

Learn More

To find out how FME can help address your data interoperability challenge, or to download a free evaluation copy of FME, visit www.safe.com.



www.safe.com