

# Directory and File Pathnames Reader

## Overview

The Directory and File Pathnames reader produces an FME feature for each file and/or directory contained in the specified directory.

It is unlikely that this reader would be used for a true translation; instead, it is most useful in combination with transformers that operate on pathnames to trigger external translations or other events.

## Path Quick Facts

Format Type Identifier	PATH
Reader/Writer	Reader
Licensing Level	Base
Dependencies	None
Dataset Type	Directory
Feature Type	PATH
Typical File Extensions	None
Automated Translation Support	No
User-Defined Attributes	No
Coordinate System Support	No
Generic Color Support	No
Spatial Index	Never
Schema Required	Not applicable
Transaction Support	No
Geometry Type	path_geom

Geometry Support			
Geometry	Supported?	Geometry	Supported?
aggregate	no	point	no
circles	no	polygon	no
circular arc	no	raster	no
donut polygon	no	solid	no
elliptical arc	no	surface	no
ellipses	no	text	no
line	no	z values	no
none	no		

---

## Reader Overview

The feature produced contains the full pathname, the directory, and the basename of the file or directory in an attributes, which can then be used by any transformers that wish to operate on pathnames.

Note that hidden files in Windows are not found by this reader.

## Reader Parameters and Directives

Workbench reader parameters are displayed in the Workbench Navigator pane. These parameters are the equivalent of FME reader mapping file directives, which are listed in the table below each parameter. Most (but not all) directives correspond directly to a Workbench parameter.

The directives that are processed by the Path reader are also listed below. The suffixes shown are prefixed by the current `<ReaderKeyword>_` in a mapping file. By default, the `<ReaderKeyword>` for the Path reader is `PATH`.

### Path Filter

**Required/Optional:** *Optional*

Specifies the search pattern to use when looking for files and directories. Only filenames and directory names that match the Path Filter will be output as features.

---

<b>Values</b>	Yes   No
<b>Default Value</b>	* (See the list below for all supported characters.)
<b>Reader Directive</b>	PATH_GLOB_PATTERN
<b>Reader Directive Example</b>	PATH_GLOB_PATTERN *.*

---

---

### Special Characters Supported

?	Matches any single character.
*	Matches any sequence of zero or more characters.
**	Matches the current directory and recursively all subdirectories
[chars]	Matches any single character in chars. If chars contains a sequence of the form a-b then any character between a and b (inclusive) will match.
{ab, cd,e,...}	Matches any of the strings ab, cd, e, etc.

---

---

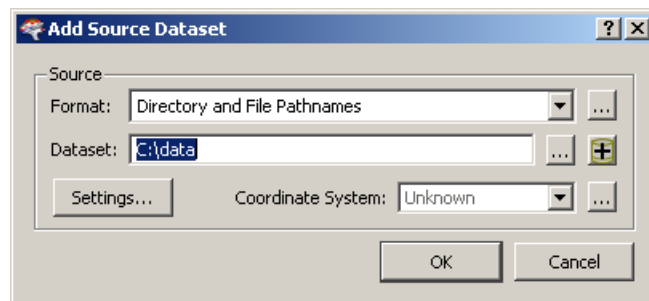
## Examples

C:\data\*.dgn	expands to all files in the <b>c:\data</b> directory that end with a .dgn extension
C:\data\**\*.dgn	expands to all files in the <b>c:\data</b> directory and any subdirectory below it that ends with a .dgn extension
C:\**\*.dgn	expands to all files on the entire <b>C:</b> drive that end with a .dgn extension
C:\{data,archive}\*.dgn	expands to all files in the <b>c:\data</b> and <b>c:\archive</b> directories that end with a .dgn extension
C:\{data,archive}\92*.dgn	expands to all files in the <b>c:\data</b> and <b>c:\archive</b> directories that start with 92 and end with a .dgn extension
C:\data\92?034.dgn	expands to all files in the <b>c:\data</b> directory that start with 92, have any letter or number next, and end with 034.dgn
C:\data\92[a-z]034.dgn	expands to all files in the <b>c:\data</b> directory that start with 92, have any lowercase letter next, and end with 034.dgn

---

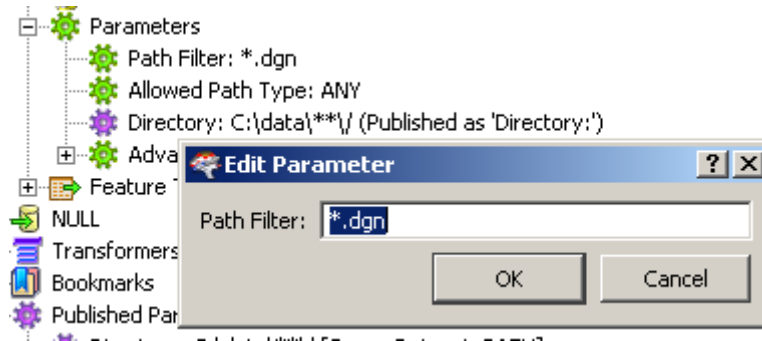
## Setting the Path Filter in Workbench

1. To specify directories and paths in Workbench, first set the directory via the Source Dataset field:



2. Click OK to add the dataset to the workspace, then click the Workbench Navigator tab to display the workspace settings.

3. Navigate to Parameters > Path Filter, double-click Path Filter parameter, and enter the extension. For example:



### Allowed Path Type

**Required/Optional:** *Optional*

Specifies whether to search for both files and directories, files only, or directories only.

<b>Values</b>	ANY   FILE   DIRECTORY
<b>Default Value</b>	ANY
<b>Reader Directive</b>	PATH_TYPE
<b>Reader Directive Example</b>	PATH_TYPE ANY

### File Size

**Required/Optional:** *Optional*

This directive specifies whether to populate the path\_filesize attribute for files only, not directories, with the corresponding byte size of the file on the file system in bytes. If set to 'NO', then the attribute will still exist but values will be set to zero.

<b>Values</b>	YES   NO
<b>Default Value</b>	NO
<b>Reader Directive</b>	CALCULATE_FILE_SIZES
<b>Reader Directive Example</b>	CALCULATE_FILE_SIZES YES

---

## Feature Representation

Path features have no geometry.

In addition to the generic FME feature attributes that FME Workbench adds to all features (see *About Feature Attributes* on page 7), this format adds the format-specific attributes described in this section.

Attribute Name	Contents
path_unix	The path of the file or directory using UNIX-style forward-slash path separators (e.g., /usr/example/Documents/example.txt). <b>Note:</b> If the dataset path specified was a relative path, then this attribute will be a relative path; otherwise, it will be an absolute path.
path_windows	The path of the file or directory using Windows-style backslash path separators (e.g., C:\Temp\example.txt). <b>Note:</b> If the dataset path specified was a relative path, then this attribute will be a relative path; otherwise, it will be an absolute path.
path_filename	The name of the file or directory without path information eg. example.txt
path_rootname	The filename without the file extension (e.g., example).
path_extension	The file extension not including the dot '.' (e.g., txt).
path_filesize	The size of the file in bytes. Directories will have a value of 0. If size cannot be determined or the CALCULATE_FILE_SIZES directive is set to 'NO' then the value will be 0.
path_directory_unix	The parent directory of the file or directory with the trailing slash using forward-slash path separators (e.g., /usr/example/Documents/). <b>Note:</b> Note: If the dataset path specified was a relative path, then this attribute will be a relative path; otherwise, it will be an absolute path.
path_directory_windows	The parent directory of the feature with the trailing slash using backslash path separators (e.g., C:\Temp\). <b>Note:</b> If the dataset path specified was a relative path, then this attribute will be a relative path; otherwise, it will be an absolute path.
path_type	Set to either "file" or "directory" depending on whether the feature is a file or a directory

